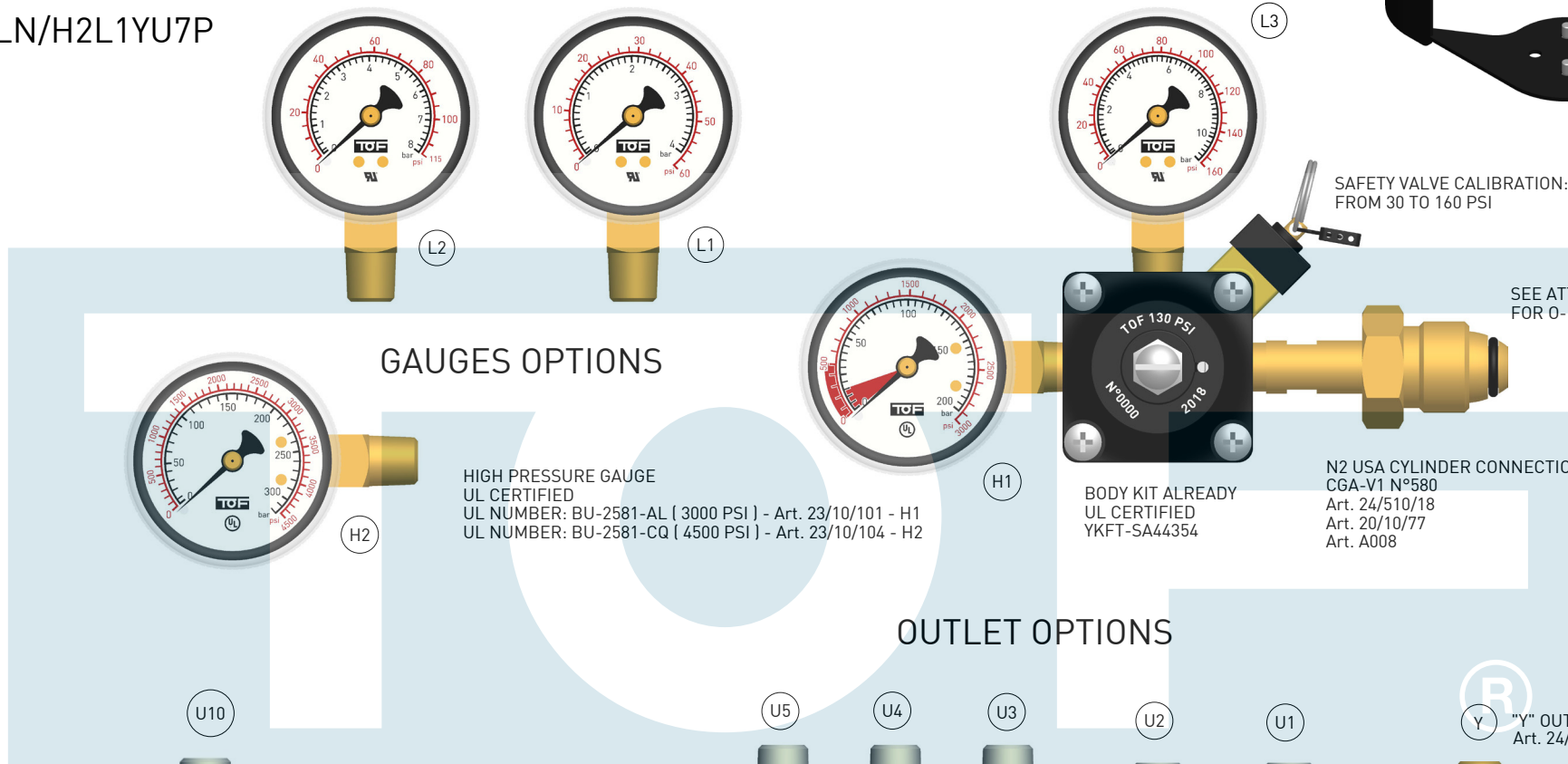
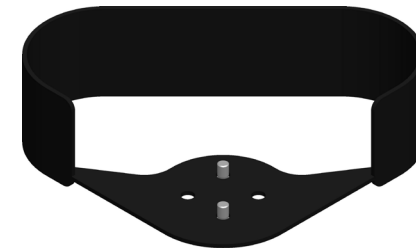


PRODUCT TYPE: 24PLN

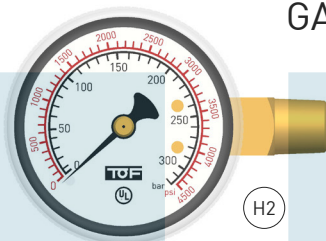
ESEMPIO CODIFICA:
24PLN/H2L1U7
24PLN/H2L1YU7P

LOW PRESSURE GAUGES
UL CERTIFIED
UL NUMBER: CU-2581-LG (60 PSI) - Art. 23/10/97 - L1
UL NUMBER: CU-2581-GR (115 PSI) - Art. 23/10/98 - L2
UL NUMBER: CU-2581-GZ (160 PSI) - Art. 23/10/99 - L3

P GAUGES PROTECTIVE PLATE
Art. 24/510/26



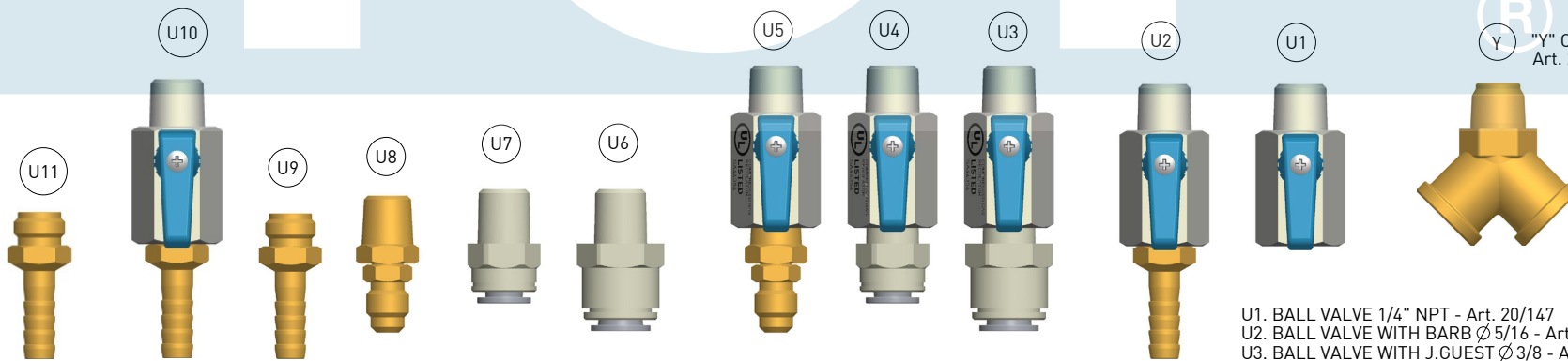
GAUGES OPTIONS



HIGH PRESSURE GAUGE
UL CERTIFIED
UL NUMBER: BU-2581-AL (3000 PSI) - Art. 23/10/101 - H1
UL NUMBER: BU-2581-CQ (4500 PSI) - Art. 23/10/104 - H2



OUTLET OPTIONS



- U1. BALL VALVE 1/4" NPT - Art. 20/147
- U2. BALL VALVE WITH BARB Ø 5/16 - Art. 20/846
- U3. BALL VALVE WITH J.GUEST Ø 3/8 - Art. 20/843
- U4. BALL VALVE WITH J.GUEST Ø 5/16 - Art. 20/844
- U5. BALL VALVE WITH 7/16"-20UNF NON RETURN VALVE - Art. 20/845
- U6. J.GUEST Ø 3/8 - Art. PI011222S
- U7. J.GUEST Ø 5/16 - Art. PM010822S
- U8. 7/16"-20UNF NON RETURN VALVE - Art. 24/510/17
- U9. BARB Ø 5/16 - Art. 20/846/1
- U10. BALL VALVE WITH BARB Ø 3/8 - Art. 20/851
- U11. BARB Ø 3/8 - Art. 24/510/25

B "Y" OUTLET FITTING
Art. 24/510/28