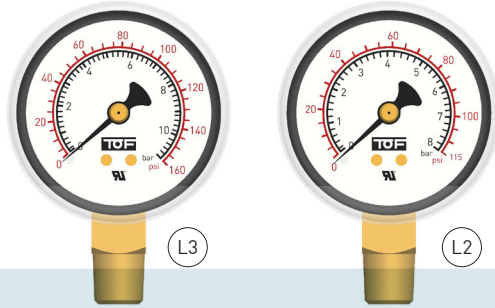


# PRODUCT TYPE: 24SL

## GAUGES OPTIONS



### LOW PRESSURE GAUGES UL CERTIFIED

UL NUMBER: CU-2581-LG ( 60 PSI ) - Art. 23/10/97 - L1  
 UL NUMBER: CU-2581-GR ( 115 PSI ) - Art. 23/10/98 - L2  
 UL NUMBER: CU-2581-GZ ( 160 PSI ) - Art. 23/10/99 - L3

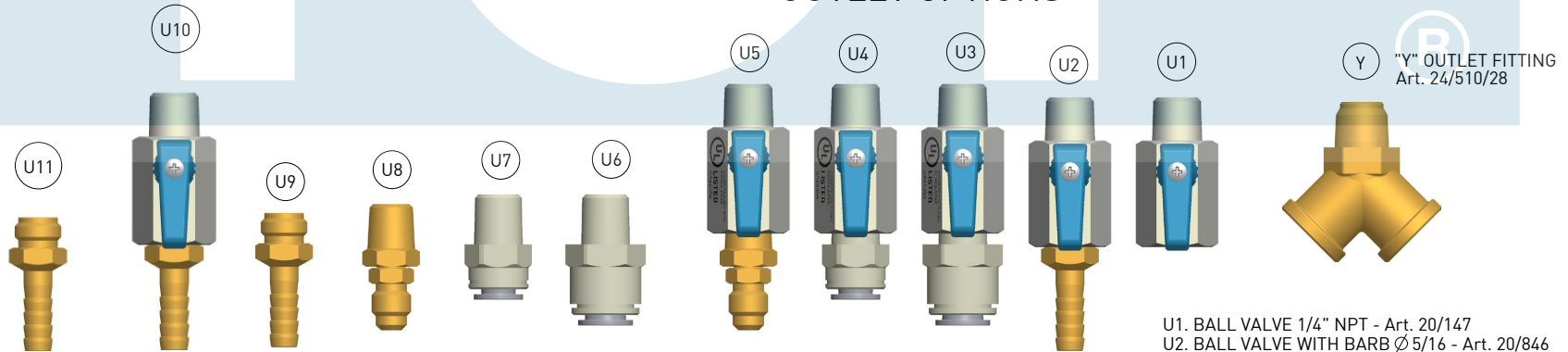
## ESEMPIO CODIFICA:

|       | A  | B  | C  | D   |   |
|-------|----|----|----|-----|---|
| 24SL/ | L1 | L2 | U6 | U3  | F |
| 24SL/ | L3 | C2 | C1 | YU4 | S |

## INLET OPTIONS

C1. BARB Ø 5/16 - Art. 20/846/1  
 C2. 7/16"-20UNF - Art. 20/828/1  
 C3. BARB Ø 3/8 - Art. 24/510/25  
 S,D. PLUG 7/16"-20UNF - Art. 24/510/21

## OUTLET OPTIONS



U1. BALL VALVE 1/4" NPT - Art. 20/147  
 U2. BALL VALVE WITH BARB Ø 5/16 - Art. 20/846  
 U3. BALL VALVE WITH J.GUEST Ø 3/8 - Art. 20/843  
 U4. BALL VALVE WITH J.GUEST Ø 5/16 - Art. 20/844  
 U5. BALL VALVE WITH 7/16"-20UNF NON RETURN VALVE - Art. 20/845  
 U6. J.GUEST Ø 3/8 - Art. PI011222S  
 U7. J.GUEST Ø 5/16 - Art. PM010822S  
 U8. 7/16"-20UNF NON RETURN VALVE - Art. 24/510/17  
 U9. BARB Ø 5/16 - Art. 20/846/1  
 U10. BALL VALVE WITH BARB Ø 3/8 - Art. 20/851  
 U11. BARB Ø 3/8 - Art. 24/510/25

BODY KIT ALREADY  
 UL CERTIFIED  
 YKFT-SA44354

F FIXING SUPPORT - Art. 23/10/65-P  
 PLASTIC MATERIAL:  
 NYLON PA6-FV30% - BLACK